

Chevron Refinery





Monkey Trap

"As we know, there are known knowns.
There are things we know we know.
We also know there are known unknowns.
That is to say, we know there are some things we do not know.
But there are also unknown unknowns,
the ones we don't know we don't know."

Secretary of Defense Donald Rumsfeld, Feb. 12, 2002



The Continuum

Hazards



Emissions / Releases



Exposures



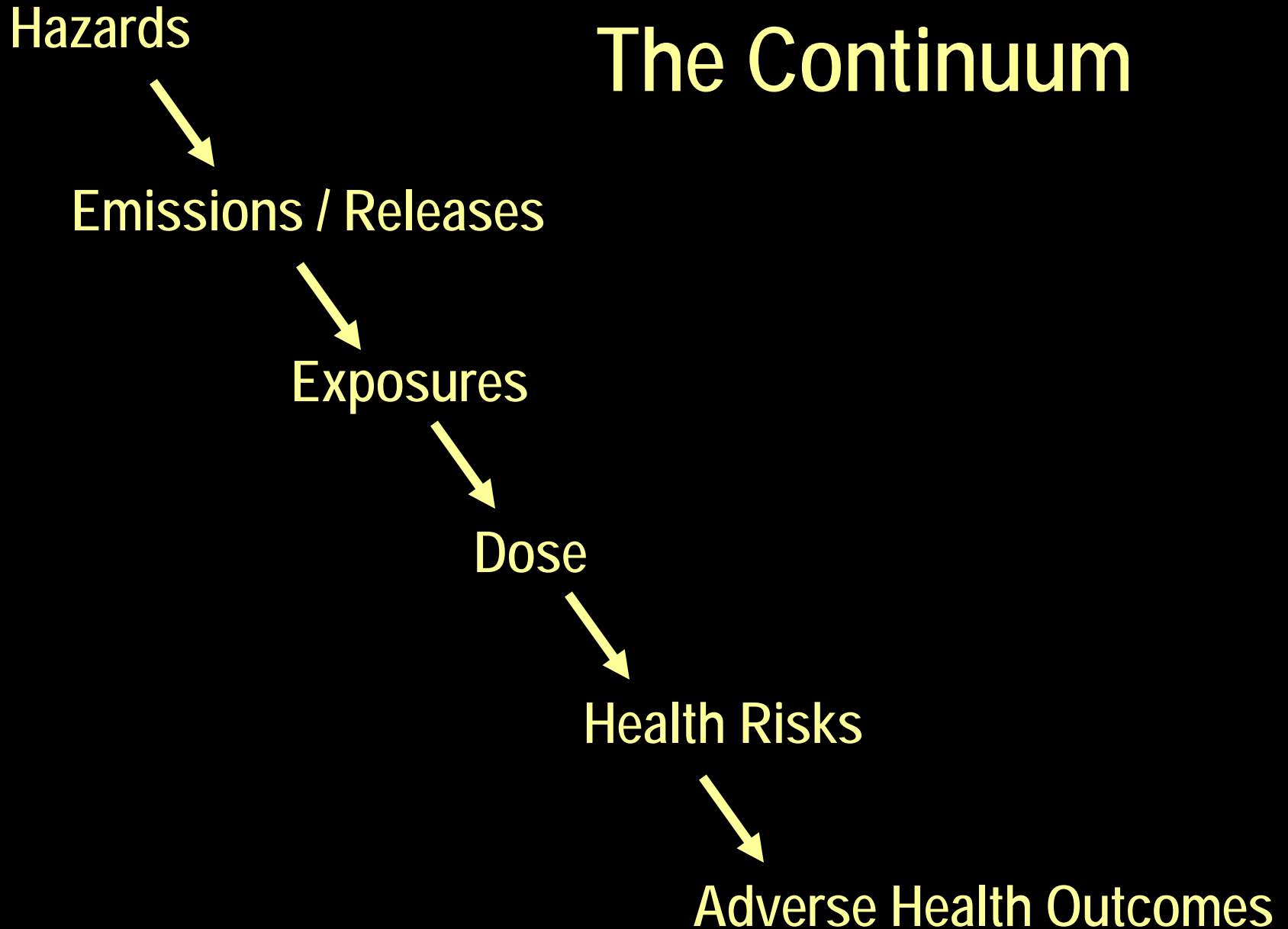
Dose

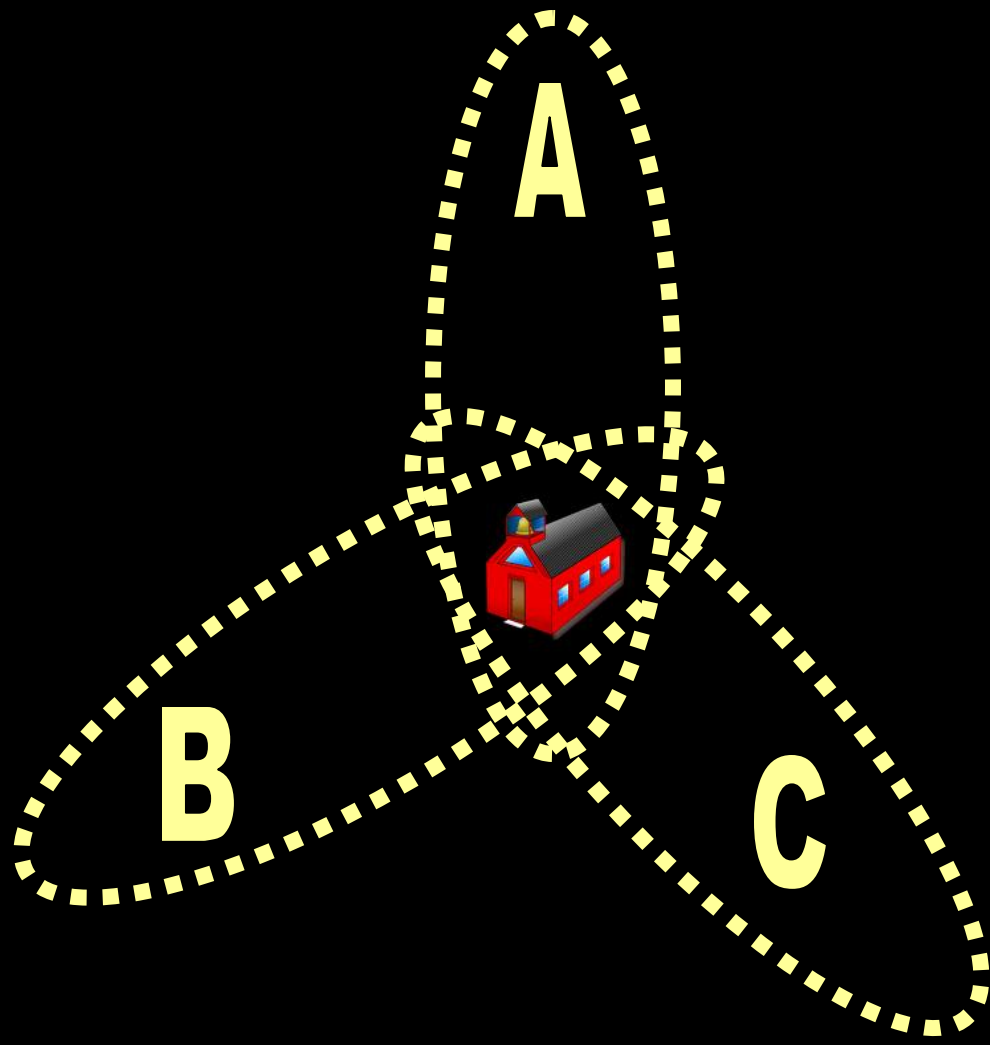


Health Risks



Adverse Health Outcomes





A

B

C

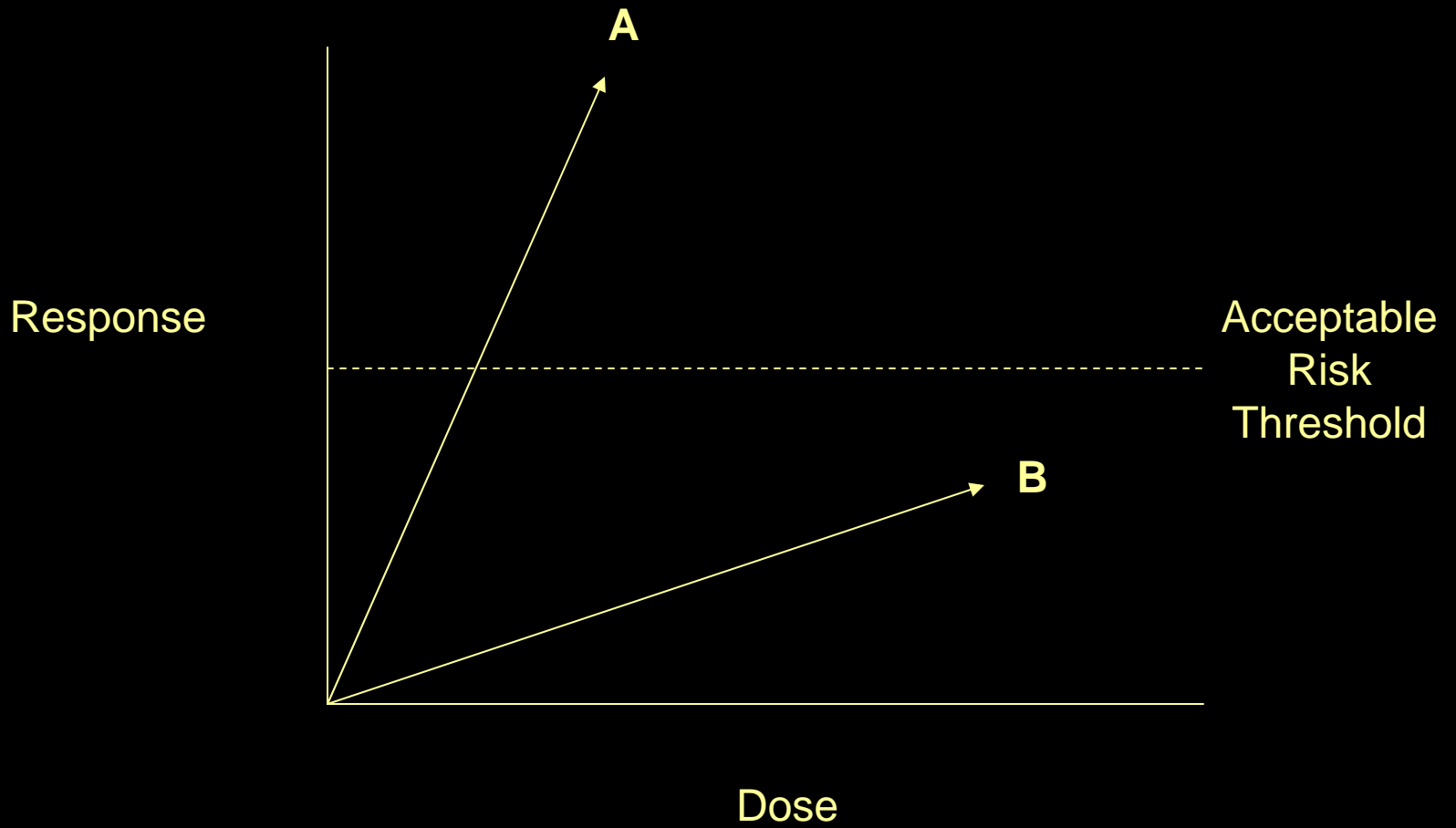
A bronze statue of a muscular man pushing a large rock inscribed with "Burden of Proof". The man is standing on a rocky ledge, leaning forward with his arms extended to support the rock. The rock is positioned on a narrow ledge, and the man's body is tensed with effort. The background is a plain, light-colored wall.

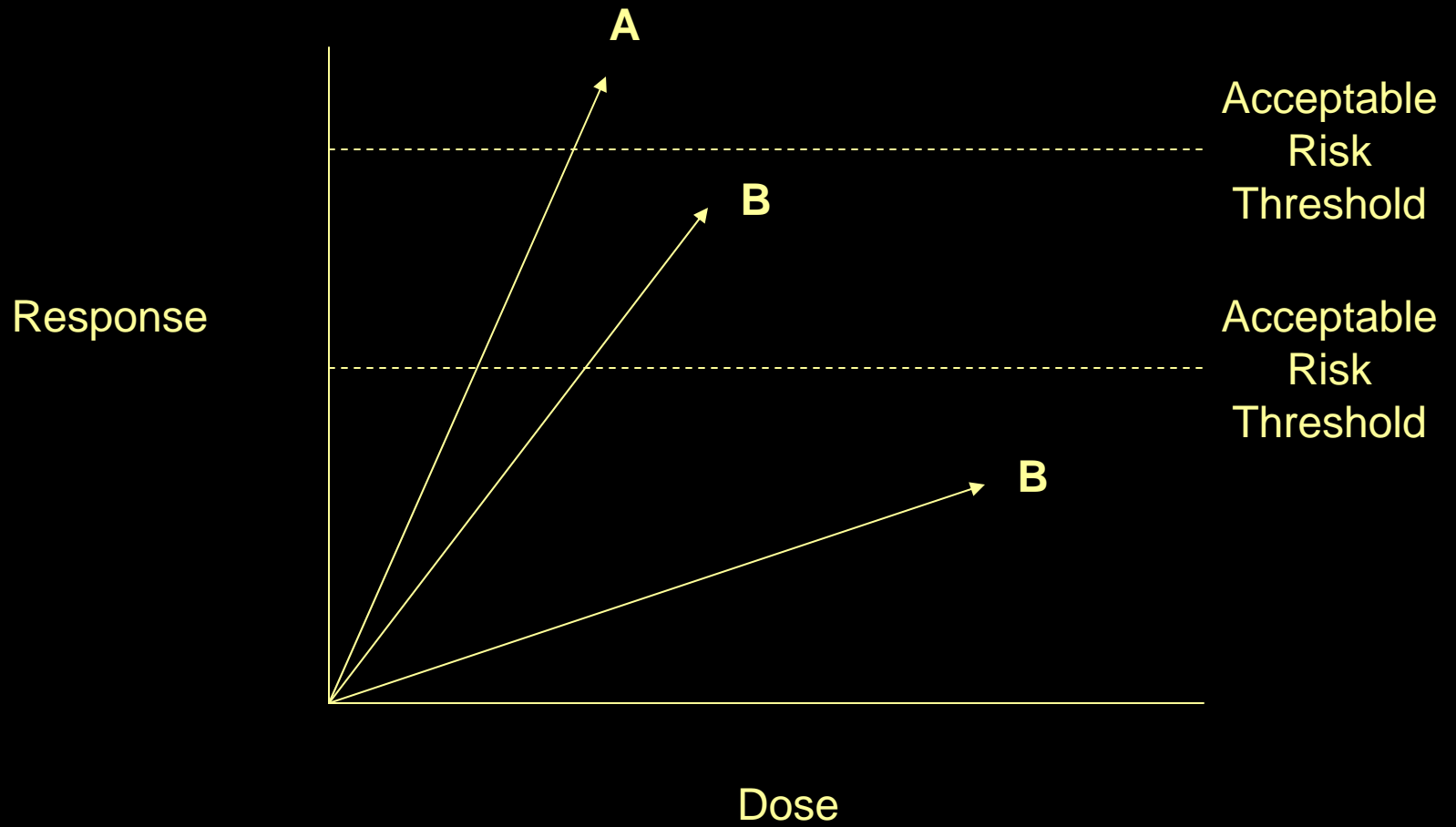
Burden
of Proof

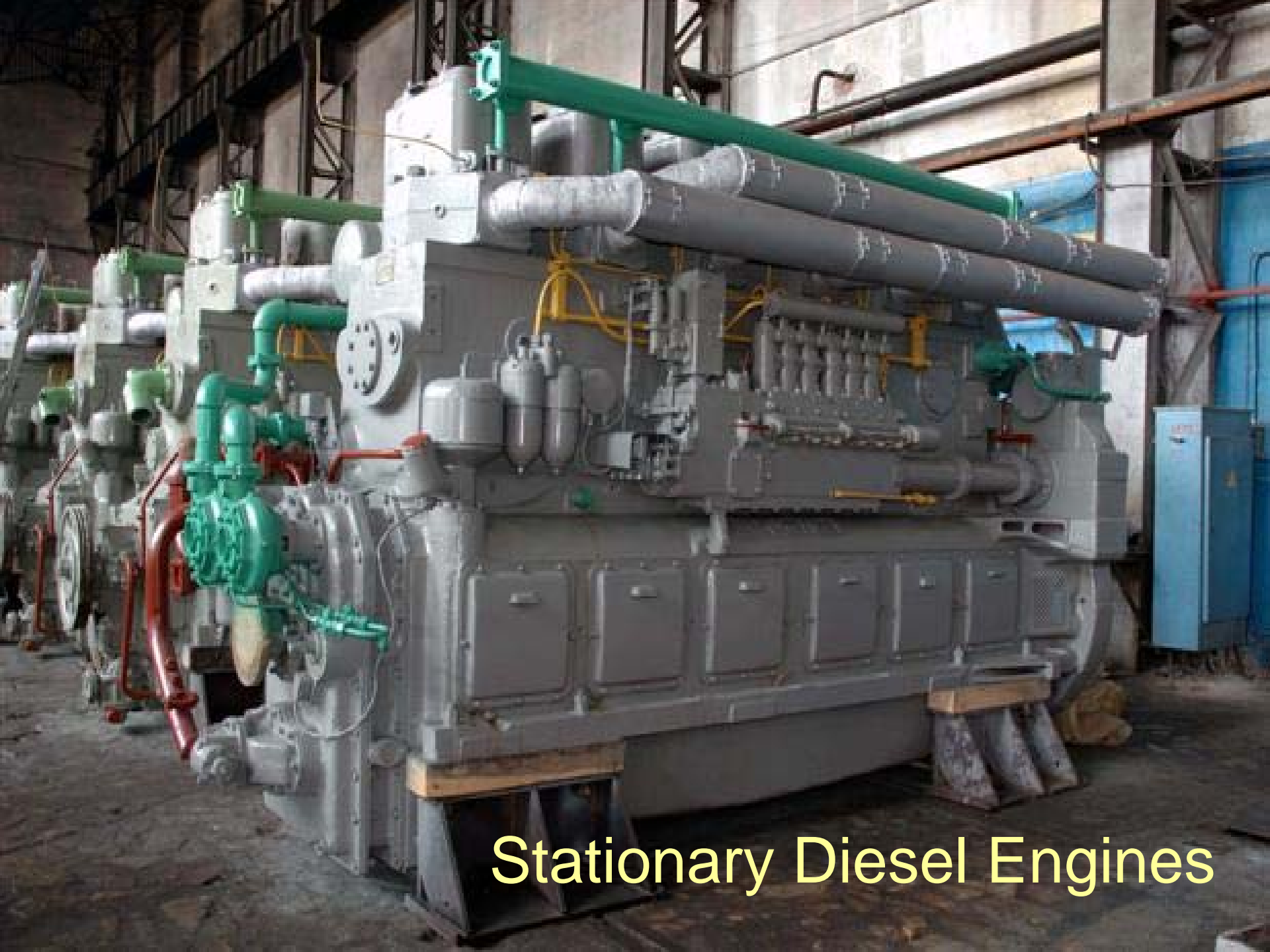
**Shifting this is
#\$%&ing hard!**

Rocket Engine Test at Rocketdyne Santa Susana Field Laboratory









Stationary Diesel Engines

AMENDED IN SENATE AUGUST 23, 2006

AMENDED IN SENATE AUGUST 7, 2006

AMENDED IN ASSEMBLY JANUARY 26, 2006

AMENDED IN ASSEMBLY JANUARY 9, 2006

AMENDED IN ASSEMBLY MAY 27, 2005

AMENDED IN ASSEMBLY MARCH 31, 2005

CALIFORNIA LEGISLATURE—2005–06 REGULAR SESSION

ASSEMBLY BILL

No. 1101

Introduced by Assembly Members Oropeza and Jerome Horton

February 22, 2005

Tough Choices

An act to amend Sections 44320, 44322, 44340, 44342, 44360, 44390, and 44391 of, and to add Sections 44303.5, 44323.5, 44350, 44395, and 44396 to, the Health and Safety Code, relating to air pollution.

LEGISLATIVE COUNSEL'S DIGEST

AB 1101, as amended, Oropeza. Air pollution: diesel magnet sources.

(1) Existing law imposes various limitations on emissions of air contaminants for the control of air pollution from vehicular and nonvehicular sources. Existing law generally designates the State Air Resources Board as the state agency with the primary responsibility for the control of vehicular air pollution, and air pollution control districts and air quality management districts with the primary responsibility for the control of air pollution from all sources other than vehicular sources, including stationary sources. The Air Toxics